

REBOUND™

Recuperation Formula

Key Nutrients

Important nutrition for the first 48 hours - recuperation period.^{1,2}

- Glutamine
- Arginine
- Taurine
- Omega-3 + 6

Vitamins

- A B1 B7
- B2 B6 B3
- D3 B12 B9
- E B5
- Choline Chloride

Minerals

- Na Mg Cl- Zn
- K Mn Fe Ca
- Cu Se I P

Amino Acids

- Methionine
- Lysine
- Cysteine
- Histidine
- Isoleucine
- Tryptophan
- Leucine
- Phenylalanine
- Tyrosine
- Threonine
- Valine
- Glutamine
- Arginine
- Taurine

Feeding Directions

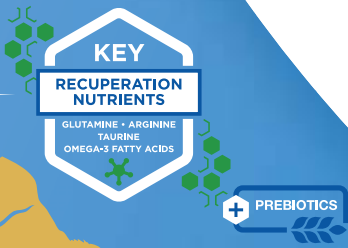
► For Dogs (per day)*

 < 22 lb	15 - 30 ml
22 - 44 lb	30 - 50 ml
> 44 lb	50 - 70 ml

► For Cats (per day)*

 < 9 lb	24 ml
9 - 13 lbs	36 ml
13 - 18 lbs	48 ml

*Feeding Guide: Please read label for full instructions.



REBOUND™

Recuperation Formula

Your solution for hydration, recuperation, and nutritional support of dogs & cats



A complementary supportive solution to help dogs and cats bounce back.

(1) Reference: Ronald J. Cutler, Winn J. S, Van Kerkhoven. Nutritional Support of Dogs and Cats after Surgery or Illness. *Open Journal of Veterinary Medicine*, April 2014, 4, 44-57. (2) Dzauvins IM, et al. *Am J Clin Nutr* 1993; 57(suppl 5): S82D. (3) Greenfield, J.R., Fanoqi, L.S., Keogh, J.M., Henning, E., Hiba, A.M., Blackwood, A., Reimers, F., Hebl, J.J., and Gribble, F.M. (2009) Oral Glutamine Increases Circulating Glucagon-Like Peptide 1, Glucagon, and Insulin Concentrations in Lean, Obese, and Type 2 Diabetic Subjects. *American Journal of Clinical Nutrition*, 89, 106-113. (4) Bower, R.H., Cerro, F.B., Berthodsky, B., et al. (1995) Early Enteral Feeding of a Formula (Impact Registered Trademark) Supplemented with Arginine, Nucleotides, and Fish Oil in Intensive Care Unit Patients: Results of a Multicenter, Prospective, Randomized, Clinical Trial. *Critical Care Medicine*, 23, 436-449. (5) Goffschlich, M.M., Jenkins, M., Warden, G.D., Baumer, T., Havens, P., Snook, J.T., and Alexander, J.W. (1990) Differential Effects of Three Dietary Regimens on Selected Outcome Variables in Burn Patients. *JPEN Journal of Parenteral and Enteral Nutrition*, 14, 225-226. (6) Redmond, H.P., Skelton, P.P., Heary, P., and Boucher-Hayes, D. (1993) Immunonutrition: The Role of Taurine. *Nutrition*, 14, 599-604. (7) Gibson, G.R., Beatty, E.R., Wang, X. and Cummings, J.H. (1995) Selective Stimulation of Bifidobacteria in the Human Colon by Oligosaccharide and Inulin. *Gastroenterology*, 108, 975-982.



Shaping the future of animal health



Shaping the future of animal health



REBOUND™ Recuperation Formula

Targeted,
balanced and
fortified nutrition
in a liquid
formulation.

REBOUND™ Recuperation Formula is a palatable liquid formulation designed to feed the gut, support the immune system and promote eating and drinking.

- 5.1 oz. bottle
- Specific formulas for dogs and cats.

Low-Calorie
Formula



Liquid form

- Poured on food
- With water
- On its own
- By tube or syringe feeding
Tube feeding does not require dilution of the product.



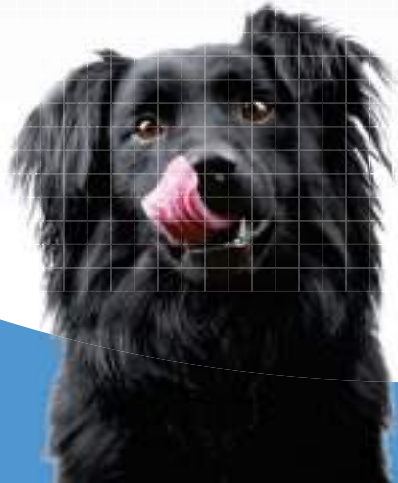
Targeted formula

- Rich in essential nutrients, Omega-3 and Omega-6, prebiotics and vitamins



Highly palatable

- Good patient compliance
- Supports healthy eating and drinking



When should REBOUND™ Recuperation Formula be used?

Recuperation Phase

Support

Full Recovery - Roughly 14 Days¹

Phase 1: First 48 Hours

Fluid therapy & nutrients



- ▶ To promote eating and drinking of recovering animals

Phase 2: On Day 3

Energy (calories) + Nutrients



- ▶ To deliver vital nutrients that support early and progressive Recuperation

REBOUND™ Recuperation Formula is a palatable and promotes eating and drinking.

REBOUND™ Recuperation Formula contains essential amino acids to provide vital nutrition to the pet and can be used with food and to maintain hydration.

Designed to support Recuperation

Key Features and Ingredients

Supports Immune Function - with Zinc, Arginine, Prebiotics^{4,7}

Supports Gastrointestinal Tract Integrity - with Glutamine³

Support Skin Health - with Zinc, Arginine, Ω3 and Ω6⁵

Antioxidants - B and E Vitamins⁶

Support Intestinal Microbial Balance - with Inulin and Fructooligosaccharides⁷